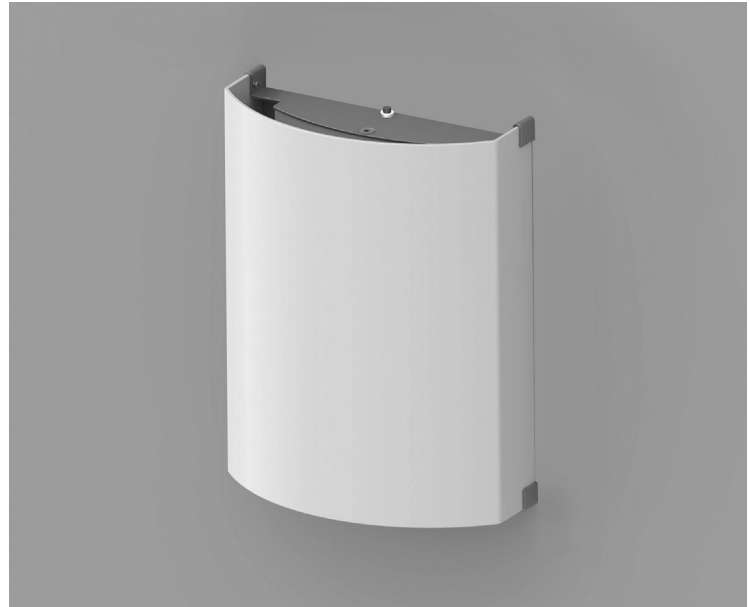


# Emergency Battery Back-Up for Betty and Bob Wall Sconces



## Specifications

- Fulham FireHorse Hotspot LED Emergency back-up system
- Fully integrated Battery Back-up, all components enclosed within fixture
- >90 Minutes of 100% light output in the case of a power outage
- 24 hour recharge time
- 120-277V input voltage
- Easy to install on all types of junction boxes, including pancake boxes
- Test button conveniently located on top of fixture
- Battery easily replaced in the field after 7 year rated lifetime
- Energy Star qualified options available
- ETL924 recognized emergency lighting system
- ETL Damp Listed
- **5 YEAR WARRANTY**



## Description

ALVA offers Fulham's industry leading, fully integrated emergency back-up system as an option for Betty and Bob wall sconces. We provide 100% light output in the case of power loss for more than 90 minutes. All electronics are fully integrated within ALVA's proprietary LED module.

## Testing the Battery Back-Up ALVA Fixture

Press and hold down the red test switch located at the top of the fixture, the fixture will switch to EM power. When the button is released the fixture will return to normal mode.

Battery should be replaced when fixture no longer provides 60% of light output at the end of 90 minutes.

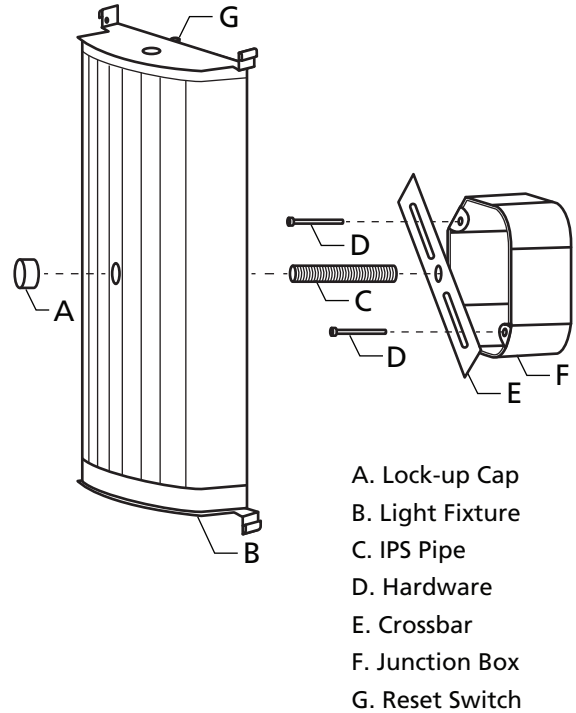
## Installation Instructions

See detailed instructions on page two of this document.



### Installing your Alva light fixture takes four easy steps:

1. Attach the crossbar to the junction box. Screw the 1/8 IPS pipe into the cross bar.
2. Connect the electrical wires from the junction box to the electrical wires of the light fixture. Please see below if using 0-10V dimming functionality.
3. Place the LED light fixture over the 1/8 IPS pipe from the universal mounting ring and carefully slide the fixture up snug to the junction box being careful to ensure the wires feed into the junction box. Screw on the lock-up cap to the 1/8 IP pipe.
4. Mount shade to the light fixture using hardware included with the shade selected for your project.



### Instructions in detail:

1. Attaching the Cross Bar
  - a. Carefully unpack your new fixture and lay all parts on a clean surface. Be careful not to lose any small parts necessary for the installation.
  - b. Pull the electrical wires part way out of the junction box for easier access.
  - c. Attach your light fixture's cross bar to the electrical junction box
2. Connecting the Electrical Wires
  - a. Connect the light fixture wires to the wires of the junction box. White to white, black to black and ground to ground. If there is no ground wire from the junction box, connect the fixture ground wire (green or yellow/green, or copper) to the mounting bar with the green screw provided. Be certain that all connections are tight and NO bare wire is visible. (note: ground wire, if unshielded copper, will show bare wire).
  - b. Tuck the wires into the junction box.
3. Securing the Light Fixture to the Cross Bar.
  - a. Slide the fixture over the 1/8 IPS pipe and gently push the fixture up until snug to the wall. Screw down the lock-up cap to secure the fixture to the wall.
4. Attaching the Diffuser to Your Light Fixture.
  - a. Position the shade/diffuser on the light fixture and using the shade/diffuser hardware, attach the shade/diffuser to the light fixture.

### Battery Back-Up Installation Instructions

Your ALVA LED module with the Fulham FireHorse HotSpot2 emergency lighting system ship with the battery disconnected. Connect the battery to the HotSpot2 Driver and secure the back cover to the module prior to installation.

### What's Included

- HotSpot LED Driver FHS2-UNV-36L
- HotSpot LED Battery Pack FHSBATL3-1.5

**GENERAL INSTALLATION GUIDELINES FOR  
LED EMERGENCY DRIVER MODEL : FHS2-UNV-36L  
IMPORTANT SAFE PRACTICES**

When using electrical equipment and this lighting device basic safety precaution should be followed at all times including but not limited to the following:

**PLEASE READ CAREFULLY AND FOLLOW ALL INSTRUCTIONS  
FOR YOUR OWN SAFETY**

IMPORTANT: An un-switched AC power source of 100VAC to 277VAC is required.

This device is designed for use in fixtures listed for damp locations.

CAUTION: Make sure all electrical connections conform to the National Electrical Code and all applicable local regulations.

CAUTION: Do not let power supply cords touch hot surfaces.

CAUTION: Do not mount near gas or electric heaters.

CAUTION: Battery is rechargeable Ni-Cad or LiFePO4 type and must be recycled or disposed of properly.

Do not use this emergency driver with accessory equipment other than recommended by manufacturer; failure to follow this may cause an unsafe condition. Servicing should only be performed by qualified service personnel.

Do not use this emergency driver for other than intended use.

Equipment should be mounted in locations and at heights where it will not readily be subjected to tampering by unauthorized personnel.

IMPORTANT: Indicator (LED light) illuminated indicates battery in charge mode when AC power is applied. It is recommended and required by applicable code to test emergency ballast to ensure proper function of the system; push the test switch for thirty (30) seconds every 30 days to ensure the emergency driver is functioning as LED light source illuminated. Conduct a ninety minute (90) discharge test one time (1) per year; LED light source should be illuminated for a minimum of ninety minutes (90).

ASSEMBLY and FIELD INSTALLATION WIRING: WARNING: AC power must be off before proceeding with assembly or installation of emergency driver.

TESTING SYSTEM: The emergency battery requires a charge minimum of one (1) hour before testing the circuit. A full charge requires twenty four (24) or thirty six (36) or forty eight (48) hours, depending upon battery pack. Please refer to battery chart for charging time.

alva™

LED-BASED ARCHITECTURAL LIGHTING  
2150 ALLSTON WAY, SUITE 400, BERKELEY, CA 94704  
P: 408.394.3054 WWW.ALVALIGHT.COM

EBB-2014-07