

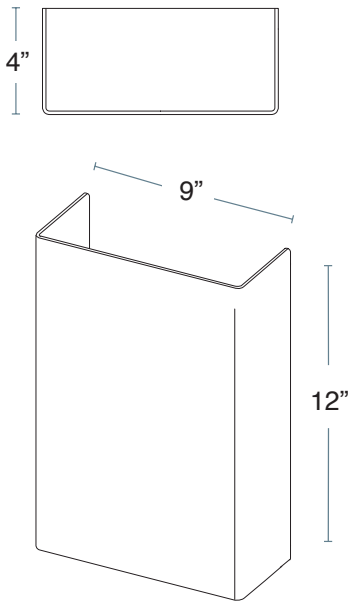
BOB Standard

HEALTHCARE GRADE LED WALL SCONCES

alva



BOB Standard shown with Island Breeze (IB) shade



APPLICATIONS	<ul style="list-style-type: none"> Healthcare Grade, Education, Multi-Family Residential, Condominiums, Retail, Corporate, Senior Living
SIZE	<ul style="list-style-type: none"> 9"W x 11.75"H x 4"D
WEIGHT	<ul style="list-style-type: none"> 3 lbs
MOUNTING	<ul style="list-style-type: none"> J-Box 3.0 or 4.0 at center or end of fixture
EMERGENCY BACK-UP OPTION	<ul style="list-style-type: none"> Fulham FireHorse Hotspot LED Emergency Back-Up System Fully integrated battery back-up, all components enclosed within fixture
DIMMING	<ul style="list-style-type: none"> Leading Edge (TRIAC) or Trailing Edge (ELV) / 100% to 10%
SPECIFICATIONS	<ul style="list-style-type: none"> IK10 UL Certified (protected against 20 joules of impact) Title24 Optional JA8 ADA Compliant UL Damp listed L70 - 100,000+ hours. 10 years / 24/7 120V or 277V 10 Year Warranty on complete fixture
MODULE	<ul style="list-style-type: none"> Available with rectangular module, 15W, for optimal light output. Circular 10W module available, however not optimal for lamp shade illumination. Both modules field replaceable.
LAMPING	<ul style="list-style-type: none"> 2700K, 3000K, 3500K, 4000K 90+ CRI
CONSTRUCTION	<ul style="list-style-type: none"> Resin: Achitectural Resin by ALVA Acrylic: White Opal matte finish



MODULE	WATTS	DELIVERED LUMENS: RESIN SHADE	DELIVERED LUMENS: WHITE OPAL ACRYLIC	INPUT
AU-R15W	15W	1115	1394	120V, 277V
AU-C10W	10W	696	870	120V, 277V

Note: For Gold Shimmer, Linear Cross, and Cayenne resin, multiply delivered lumens by .8

BOB Standard

HEALTHCARE GRADE LED WALL SCONCES

alva

Optional Decorative Elements

Assembly required, refer to installation guide

Wood or Metal Powder Coat Finish:

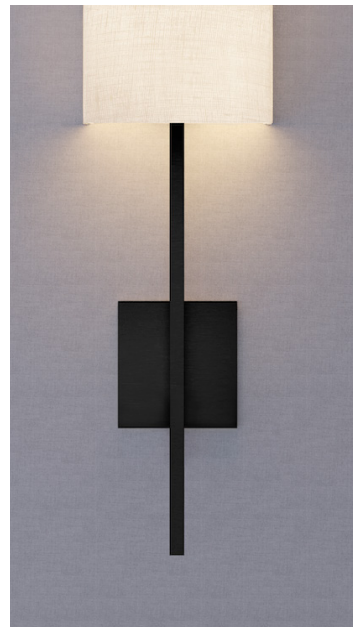


4" DOOR PANEL PLAQUE, **DP3A**

Metal with Powder Coat Finish:



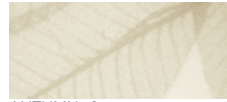
WOOD U-CHANNEL SMALL, **DE3A**
SUGAR PALM (HOR), **SPH**



MODERN ARMATURE, **DE10A**
BLACK, **BLK**

Architectural Resin

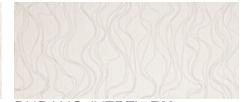
Please Contact Sales Rep for Resin Samples



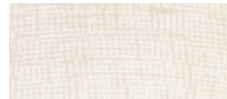
AUTUMN, **A**



RAIN (VERT), **RV**



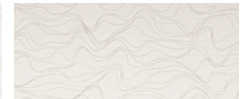
BURANO (VERT), **BV**



ISLAND BREEZE, **IB**



RAIN (HOR), **RH**



BURANO (HOR), **BH**



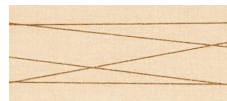
LINEAR CROSS (VERT), **LCV**



GOLD SHIMMER (VERT), **GSV**



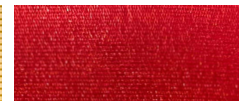
CAYENNE (VERT), **CVV**



LINEAR CROSS (HOR), **LCH**



GOLD SHIMMER (HOR), **GSH**



CAYENNE (HOR), **CYH**



FAUX ALABASTER, **FA**



WHITE OPAL ACRYLIC, **WO**

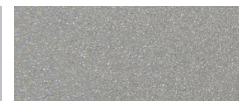
Metal Powder Coat Finishes



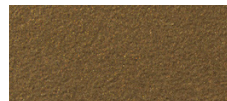
ENVIRO SATIN BRASS, **ESB**



POLISHED NICKEL, **PN**



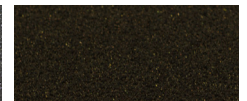
ENVIRO SATIN NICKEL, **ESN**



ENVIRO OIL-RUBBED
BRONZE, **EOB**



GRAPHITE, **GR**



DARK BRONZE, **DB**



WHITE, **WHT**



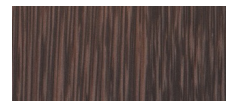
BLACK, **BLK**

Custom RAL colors
also available (**CP**)

Wood Finishes (U-Channel & Door Panel Decorative Elements Only)



SUGAR PALM (HOR), **SPH**



SUGAR PALM (VERT), **SPV**



WALNUT, **W**



BAMBOO, **BA**

Bob Standard Modular LED Wall Sconce



Fixture:

Project:

EXAMPLE: AU - R15W - 30 - 9 - CU9W12H - WO - DE3B - W

ORDER CODE:

Family	
AU	AUBERGE BY ALVA
LED Module	
C10W	10W
R15W	15W
CCT	
27	2700K
30	3000K
35	3500K
40	4000K
CRI	
9	90+ CRI
Input Voltage	
120	120V
277	277V
Shade Shape	
RE9W12H	Rectangle 9"W x 12"H x 4" projection
Shade Pattern	
<i>Resin Shade Patterns</i>	
IB	Island Breeze
A	Autumn
FA	Faux Alabaster
LCV	Linear Cross, Vertical
LCH	Linear Cross, Horizontal
GSV	Gold Shimmer, Vertical
GSH	Gold Shimmer, Horizontal
BV	Burano, Vertical
BH	Burano, Horizontal
CYV	Cayenne, Vertical
CYH	Cayenne, Horizontal
RV	Rain, Vertical
RH	Rain, Horizontal
<i>Acrylic Shade Options</i>	
WO	White Opal Acrylic
OPTIONAL Decorative Element (Assembly Required, Refer To Installation Guide)	
DE10A	Modern Armature 5"W x 5"H Face Plate, 12"H
DE3A	Wood U-Channel, Small 6.5"W x 3"H x 1.75" deep
DE3B	Wood U-Channel, Large 8.5"W x 3"H x 1.75" deep
DP3A	4" Door Panel 6.5"W x 3.5"H
DP3B	4" Door Panel 8.5"W x 3.5"H
DP9A	9" Door Panel 6.5"W x 9"H
DP9B	9" Door Panel 8.5"W x 9"H
DP12A	12" Door Panel 6.5"W x 12"H
DP12B	12" Door Panel 8.5"W x 12"H
DP18A	18" Door Panel 6.5"W x 18"H
DP18B	18" Door Panel 8.5"W x 18"H
DP24A	24" Door Panel 6.5"W x 24"H
DP24B	24" Door Panel 8.5"W x 24"H
DP36A	36" Door Panel 6.5"W x 36"H
DP36B	36" Door Panel 8.5"W x 36"H
Decorative Element Finish	
<i>Powder Coat Finishes</i>	
EOB	Enviro Oil-Rubbed Bronze
ESN	Enviro Satin Nickel
ESB	Enviro Satin Brass
GR	Graphite
DB	Dark Bronze
PN	Polished Nickel
WHT	Matte White
BLK	Matte Black
CP	Custom RAL Powder Coat (MOQ may apply)
<i>Wood Finishes (Wood U-Channel & Door Panel only)</i>	
W	Walnut
SPV	Sugar Palm Vertical Grain
SPH	Sugar Palm Horizontal Grain
BA	Bamboo
OPTIONAL Door Panel Plaque	
DPP	Door Panel Plaques are for Door Panel Decorative Elements only. Door number plaque can be personalized by Finish, Logo/Branding, Font Style, Font Size, Size of Plaque.
OPTIONAL Sealed Top Lens	
SLT1	Single sealed lens cover (1) for Top Only of sconce.
L1	Single lens (not sealed) for bottom only of sconce to prevent seeing up inside the sconce for sconces mounted higher than usual.
OPTIONAL Emergency Back up	
EM	Emergency Battery Back-up
OPTIONAL JA8	
JA8	JA8 Compliant

AU

9

RE9W12H