

# Indira Curve & Rectangle

alva®



Left: Curved Sconce, Up & Down Light, Graphite Finish  
Right: 10" Panel, Up & Down Light with Optional Door Number Plaque

## APPLICATIONS

- Multi-Family Residential / Condominiums, Retail, Corporate, Senior Living, Healthcare, Education

## SHADE DIMENSIONS

- Round or Rectangular Shade: 4.5"W x 10"H x 3" projection
- Optional panel comes in four standard lengths: 5", 10", 15", 20"

## DIMMING

- TRIAC/ELV Dimming

## MOUNTING

- Flexible mounting system with universal crossbar and threaded pipe. Refer to installation guide for more details
- Mounts to center of J-box at 5.5" from top of shade

## SPECIFICATIONS

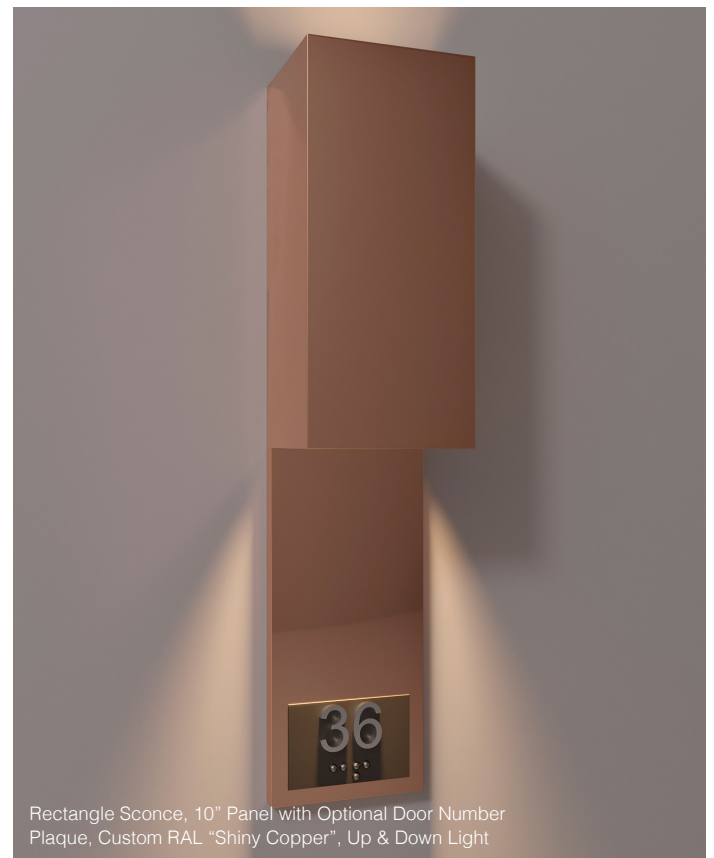
- Title 24 JA8 Compliant
- UL Damp Listed
- ADA Compliant
- Made in the USA, BAA compliant
- 10 Year Warranty

## LAMPING

- Field Replaceable LED Module
- 10W
- 90 CRI
- Select from 2200K, 2700K, 3000K, 3500K, or 4000K CCT
- L70 100,000+ Hours
- 100+ LPW
- 120-277 Input Voltage

## CONSTRUCTION

- Shade is manufactured with aluminum and finished in an architectural-grade powder coat



Rectangle Sconce, 10" Panel with Optional Door Number Plaque, Custom RAL "Shiny Copper", Up & Down Light



UL

ADA

TITLE  
24

BAA

10YR  
WARRANTY

JA8

# Indira Curve & Rectangle

alva®

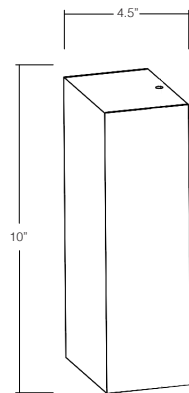


Left: Curved Sconce, Up & Down Light, Graphite Finish  
Right: 10" Panel, Up & Down Light with Optional Door Number Plaque

## RECTANGLE SCONCE, RE4W10H:



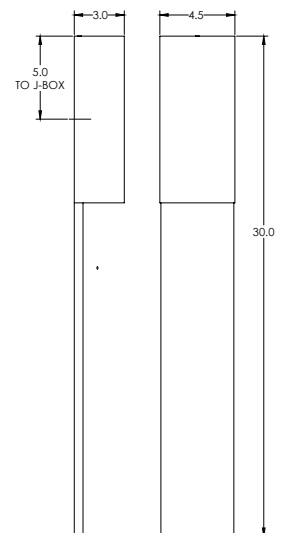
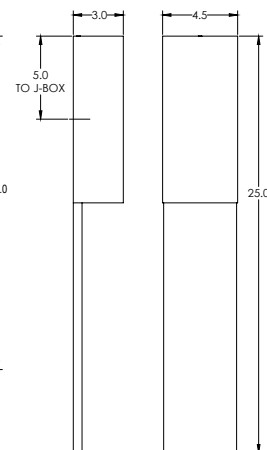
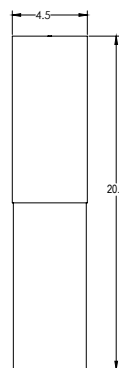
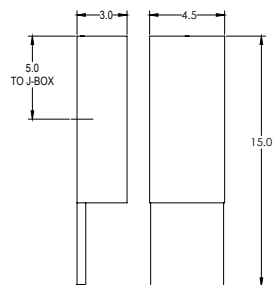
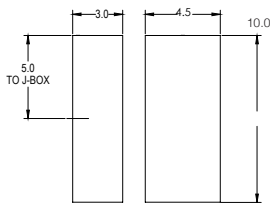
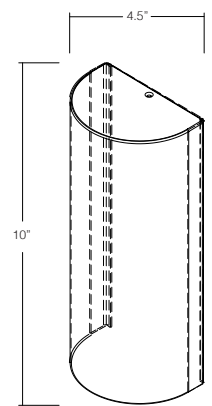
Down Light Only, Black Finish



## CURVED SCONCE, CU4W10H:



Up & Down Light, Graphite Finish



# Indira Curve & Rectangle

alva®

## SHADE LIGHT OPTIONS:



Down Light Only, MT1



Up and Down Light, MT2

## METAL POWDER COAT FINISH OPTIONS:



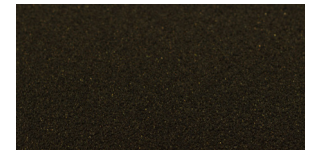
Enviro Satin Nickel, ESN



Graphite, GR



Enviro Oil-Rubbed Bronze, EOB



Dark Bronze, DB



Matte Black, BLK



Matte White, WHT

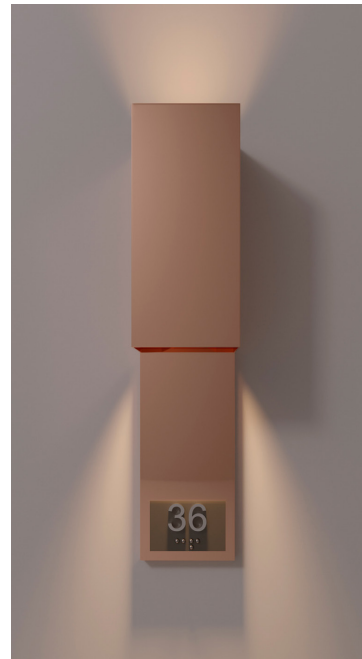
## PANEL LENGTH OPTIONS:



PN20, Enviro Oil-Rubbed Bronze



PN15, Enviro Satin Nickel



PN10, Custom RAL "Shiny Copper"



PN5, Matte White

## ORDER CODE:

BRAND	LED MODULE	CCT	CRI	INPUT VOLTAGE	SHADE SHAPE	SHADE LIGHT	PANEL LENGTH (OPTIONAL)	POWDER COAT FINISH	DOOR PANEL PLAQUE (OPTIONAL MUST SPECIFY)
<b>AU</b>	<b>C10W</b>		<b>9</b>						
		<b>2200</b> 2200K		<b>120</b> 120 Volts	<b>RE4W10H</b> Rectangle Shade	<b>MT1</b> Down Light Only	<b>PN5</b> Extends 5" below fixture	<b>ESN</b> Enviro Satin Nickel	<b>DPP</b> Door Panel Plaque
		<b>2700</b> 2700K		<b>277</b> 277 Volts	<b>CU4W10H</b> Curved Shade	<b>MT2</b> Down/Up Light	<b>PN10</b> Extends 10" below fixture	<b>EOB</b> Enviro Oil-Rubbed Bronze	
		<b>3000</b> 3000K					<b>PN15</b> Extends 15" below fixture	<b>GR</b> Graphite	
		<b>3500</b> 3500K					<b>PN20</b> Extends 20" below fixture	<b>DBT</b> Dark Bronze	
		<b>4000</b> 4000K						<b>WHT</b> White	
								<b>BLK</b> Black	
								<b>CP</b> Custom RAL Finish	