

Rectangle 7"W x 14"H

RE7W14H is a personal approach to building the perfect fixture for your project. Sconce can be ordered as a stand alone fixture or you can add one of our decorative elements.

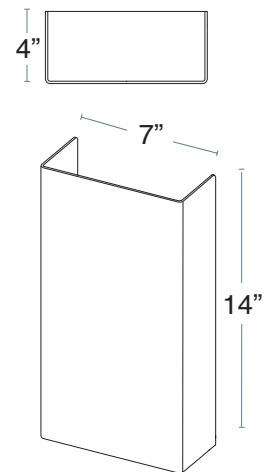
IES FILES AVAILABLE



AVAILABLE WITH OPTIONAL DECORATIVE ELEMENTS

See website for all options

MODULE	Choose 15W or 10W high-performance, field replaceable LED module.
RATED LIFETIME	L70 100,000+ hours
SHADE	IK10 UL Certified high impact resin
CERTIFICATIONS	UL Damp Listed, RoHS, IK10 UL Certified, Title24 JA8 Certified, Energy Star
BATTERY BACK-UP	Optional Emergency Battery Back-up
WARRANTY	10 Years
WATTAGE	15W, 10W
INPUT VOLTAGE	UNV (120-277VAC)
CRI	90+
DIMMING	Triac/ELV (120V only)
WEIGHT	3 LBS
PROJECTION	4", ADA Compliant



FIXTURE	MODULE	WATTS	DELIVERED LUMENS: RESIN SHADE	DELIVERED LUMENS: WHITE OPAL ACRYLIC	INPUT
RE7W14H	AU-R15W	15W	1115	1394	120V, 277V
	AU-C10W	10W	696	870	120V, 277V

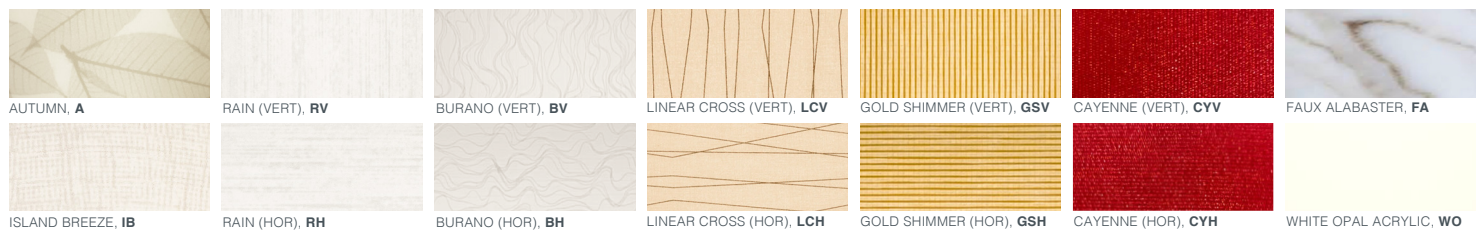
Note: For Gold Shimmer, Linear Cross, and Cayenne resin, multiply delivered lumens by .8

ORDER CODE:

EXAMPLE: AU - C10W - 30 - 9 - RE7W14H - WO - DE10A - BLK - TLC

FAMILY	LED MODULE	CCT	CRI	SHADE SHAPE	SHADE PATTERN	DECORATIVE ELEMENT	DECORATIVE ELEMENT FINISH	OPTIONAL DOOR PANEL PLAQUE	LENS OPTIONS	OPTIONAL EMERGENCY BATTERY BACK-UP
AU			9	RE7W14H						
	C10W R15W	22 2200K	9 90+ CRI	RE7W14H 7"W x 14"H x 4"D	Resin IB A FA LCV LCH GSV GSH BV BH CYV CYH RV RH Acrylic Shade WO	DE10A DE3A DP3A DP6A DP9A DP12A DP18A DP24A DP36A ELPS ELPL	Powder Coat EOB ESN ESB GR DB PN WHT BLK CP Wood Finishes WAL SPV SPH BA	DPP	BLC TLC STLC	EM
		27 2700K								
		30 3000K								
		35 3500K								
		40 4000K								

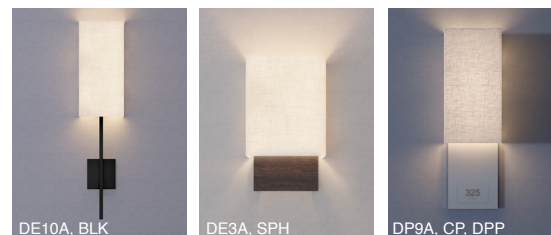
IK10 UL Certified High Impact Resin Options



Decorative Element Options

Sconce can be ordered as a stand alone fixture or paired with a decorative element. For full selection of current available DEs please visit alvalight.com/design-your-light

- | | |
|---|---|
| DE10A Modern Armature 5"W x 5"H Face Plate, 12"H | DP18A 18" Door Panel, 6.5"W x 18"H |
| DE3A Wood U-Channel, Small 6.5"W x 3"H x 1.75"D | DP24A 24" Door Panel, 6.5"W x 24"H |
| DP3A 4" Door Panel, 6.5"W x 3.5"H | DP36A 36" Door Panel, 6.5"W x 36"H |
| DP6A 6" Door Panel, 6.5"W x 6"H | ELPS Ellipse Short |
| DP9A 9" Door Panel, 6.5"W x 9"H | ELPL Ellipse Long |
| DP12A 12" Door Panel, 6.5"W x 12"H | |

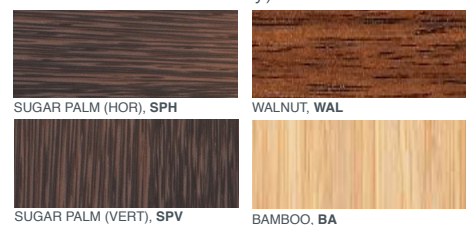


Decorative Element Finish Options

Metal Powder Coat Finishes



Wood Finishes (U-Channel & Door Panel Decorative Elements Only)



Custom RAL Powdercoat Colors also available (CP), MOQ may apply.

Optional Door Panel Plaques



Door Panel Plaques are for Door Panel Decorative Elements only. Door number plaque can be personalized by Finish, Logo/Branding, Font Style, Font Size, Braille, Size of Plaque.

Lens Options

- BLC** Bottom Lens Cover (BLC)
- TLC** Top Lens Cover (TLC)
- STLC** Sealed Top Lens Cover (STLC)