



Curve 9”W x 12”H

CU9W12H is a personal approach to building the perfect fixture for your project. Sconce can be ordered as a stand alone fixture or you can add one of our decorative elements.

IES FILES AVAILABLE



AVAILABLE WITH OPTIONAL DECORATIVE ELEMENTS

See website for all options

MODULE	Choose 15W or 10W high-performance, field replaceable LED module.
RATED LIFETIME	L70 100,000+ hours
SHADE	IK10 UL Certified high impact resin
CERTIFICATIONS	UL Damp Listed, RoHS, IK10 UL Certified, Title24 JA8 Certified, Energy Star
BATTERY BACK-UP	Optional Emergency Battery Back-up
WARRANTY	10 Years
WATTAGE	15W, 10W
INPUT VOLTAGE	UNV (120-277VAC)
CRI	90+
DIMMING	Triac/ELV (120V only)
WEIGHT	3 LBS
PROJECTION	4”, ADA Compliant

FIXTURE	MODULE	WATTS	DELIVERED LUMENS: RESIN SHADE	DELIVERED LUMENS: WHITE OPAL ACRYLIC	INPUT
CU9W12H	AU-R15W	15W	1115	1394	120V, 277V
	AU-C10W	10W	696	870	120V, 277V

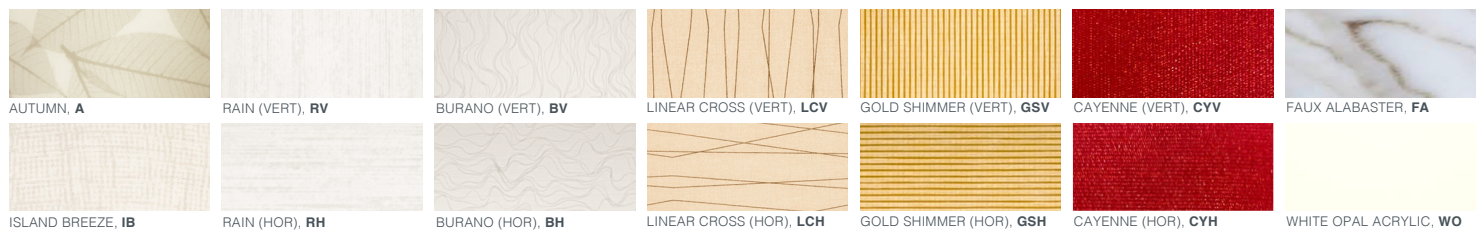
Note: For Gold Shimmer, Linear Cross, and Cayenne resin, multiply delivered lumens by .8

ORDER CODE:

EXAMPLE: AU - C10W - 30 - 9 - CU9W12H - WO - DE10A - BLK - TLC

FAMILY	LED MODULE	CCT	CRI	SHADE SHAPE	SHADE PATTERN	DECORATIVE ELEMENT	DECORATIVE ELEMENT FINISH	OPTIONAL DOOR PANEL PLAQUE	LENS OPTIONS	OPTIONAL EMERGENCY BATTERY BACK-UP
AU	C10W R15W	22 2200K	9 90+ CRI	CU9W12H 9"W x 12"H x 4"D	Resin IB A FA LCV LCH GSV GSH BV BH CYV CYH RV RH Acrylic Shade WO	DE10A DE3A DE3B DP3A DP3B DP6A DP6B DP9A DP9B DP12A DP12B DP18A DP18B DP24A DP24B DP36A DP36B ELPS ELPL	Powder Coat EOB ESN ESB GR DB PN WHT BLK CP Wood Finishes WAL SPV SPH BA	DPP	BLC TLC STLC	EM
		27 2700K								
		30 3000K								
		35 3500K								
		40 4000K								

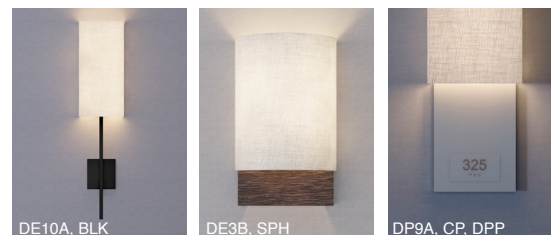
IK10 UL Certified High Impact Resin Options



Decorative Element Options

Sconce can be ordered as a stand alone fixture or paired with a decorative element. For full selection of current available DEs please visit alvalight.com/design-your-light

- DE10A Modern Armature 5"W x 5"H Face Plate, 12"H
- DE3A Wood U-Channel, Small 6.5"W x 3"H x 1.75"D
- DE3B Wood U-Channel, Large 8.5"W x 3"H x 1.75"D
- DP3A 4" Door Panel, 6.5"W x 3.5"H
- DP3B 4" Door Panel, 8.5"W x 3.5"H
- DP6A 6" Door Panel, 6.5"W x 6"H
- DP6B 6" Door Panel Wide, 8.5"W x 6"H
- DP9A 9" Door Panel, 6.5"W x 9"H
- DP9B 9" Door Panel Wide, 8.5"W x 9"H
- DP12A 12" Door Panel, 6.5"W x 12"H
- DP12B 12" Door Panel Wide, 8.5"W x 12"H
- DP18A 18" Door Panel, 6.5"W x 18"H
- DP18B 18" Door Panel Wide, 8.5"W x 18"H
- DP24A 24" Door Panel, 6.5"W x 24"H
- DP24B 24" Door Panel Wide, 8.5"W x 24"H
- DP36A 36" Door Panel, 6.5"W x 36"H
- DP36B 36" Door Panel Wide, 8.5"W x 36"H
- ELPS Ellipse Short
- ELPL Ellipse Long

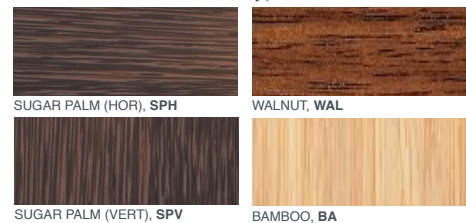


Decorative Element Finish Options

Metal Powder Coat Finishes



Wood Finishes (U-Channel & Door Panel Decorative Elements Only)



Custom RAL Powdercoat Colors also available (CP), MOQ may apply.

Optional Door Panel Plaques



Door Panel Plaques are for Door Panel Decorative Elements only. Door number plaque can be personalized by Finish, Logo/Branding, Font Style, Font Size, Braille, Size of Plaque.

Lens Options

- BLC Bottom Lens Cover (BLC)
- TLC Top Lens Cover (TLC)
- STLC Sealed Top Lens Cover (STLC)