



## Curve 7"W x 14"H

**CU7W14H** is a personal approach to building the perfect fixture for your project. Sconce can be ordered as a stand alone fixture or you can add one of our decorative elements.

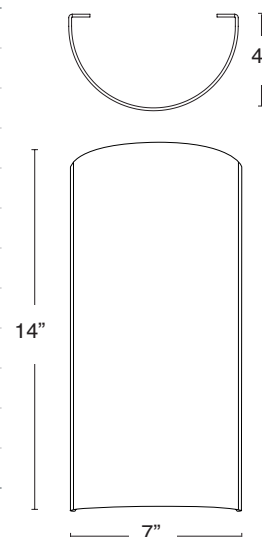
### IES FILES AVAILABLE



### AVAILABLE WITH OPTIONAL DECORATIVE ELEMENTS

See website for all options

<b>MODULE</b>	Choose 15W or 10W high-performance, field replaceable LED module.
<b>RATED LIFETIME</b>	L70 100,000+ hours
<b>SHADE</b>	IK10 UL Certified high impact resin
<b>CERTIFICATIONS</b>	UL Damp Listed, RoHS, IK10 UL Certified, Title24 JA8 Certified, Energy Star
<b>BATTERY BACK-UP</b>	Optional Emergency Battery Back-up
<b>WARRANTY</b>	10 Years
<b>WATTAGE</b>	15W, 10W
<b>INPUT VOLTAGE</b>	UNV (120-277VAC)
<b>CRI</b>	90+
<b>DIMMING</b>	Triac/ELV (120V only)
<b>WEIGHT</b>	3 LBS
<b>PROJECTION</b>	4", ADA Compliant



FIXTURE	MODULE	WATTS	DELIVERED LUMENS: RESIN SHADE	DELIVERED LUMENS: WHITE OPAL ACRYLIC	INPUT
CU7W14H	AU-R15W	15W	1115	1394	120V, 277V
	AU-C10W	10W	696	870	120V, 277V

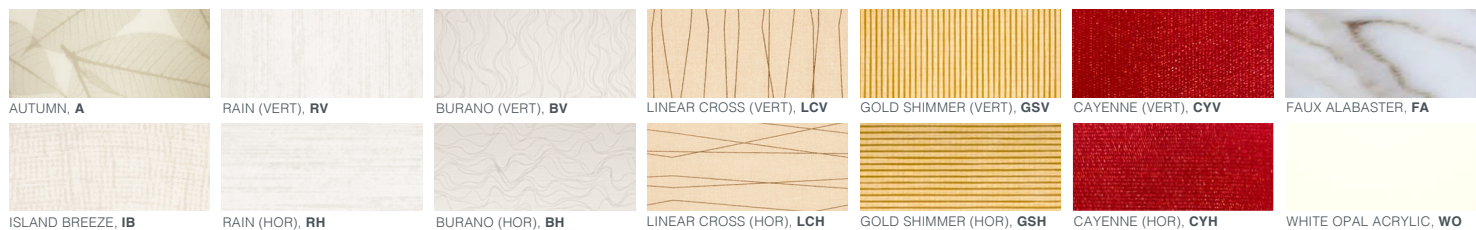
Note: For Gold Shimmer, Linear Cross, and Cayenne resin, multiply delivered lumens by .8

**ORDER CODE:**

**EXAMPLE:** AU - C10W - 30 - 9 - CU7W14H - WO - DE10A - BLK - TLC

FAMILY	LED MODULE	CCT	CRI	SHADE SHAPE	SHADE PATTERN	DECORATIVE ELEMENT	DECORATIVE ELEMENT FINISH	OPTIONAL DOOR PANEL PLAQUE	LENS OPTIONS	OPTIONAL EMERGENCY BATTERY BACK-UP
AU	C10W R15W	22 2200K	9 90+ CRI	CU7W14H 7"W x 14"H x 4"D	Resin IB A FA LCV LCH GSV GSH BV BH CYV CYH RV RH  Acrylic Shade WO	DE10A DE3A DP3A DP6A DP9A DP12A DP18A DP24A DP36A ELPS ELPL	Powder Coat  EOB ESN ESB GR DB PN WHT BLK CP  Wood Finishes  WAL SPV SPH BA	DPP	BLC TLC STLC	EM
		27 2700K								
		30 3000K								
		35 3500K								
		40 4000K								

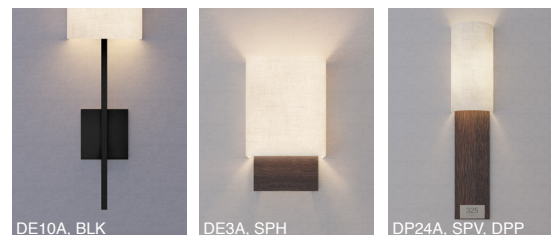
**IK10 UL Certified High Impact Resin Options**



**Decorative Element Options**

Sconce can be ordered as a stand alone fixture or paired with a decorative element. For full selection of current available DEs please visit [alvalight.com/design-your-light](http://alvalight.com/design-your-light)

- DE10A** Modern Armature 5"W x 5"H Face Plate, 12"H
- DE3A** Wood U-Channel, Small 6.5"W x 3"H x 1.75"D
- DP3A** 4" Door Panel, 6.5"W x 3.5"H
- DP6A** 6" Door Panel, 6.5"W x 6"H
- DP9A** 9" Door Panel, 6.5"W x 9"H
- DP12A** 12" Door Panel, 6.5"W x 12"H
- DP18A** 18" Door Panel, 6.5"W x 18"H
- DP24A** 24" Door Panel, 6.5"W x 24"H
- DP36A** 36" Door Panel, 6.5"W x 36"H
- ELPS** Ellipse Short
- ELPL** Ellipse Long



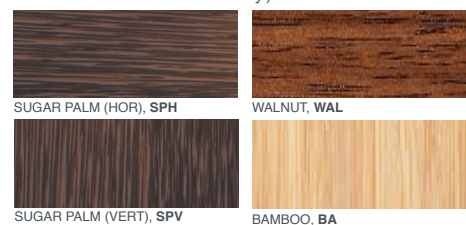
**Decorative Element Finish Options**

**Metal Powder Coat Finishes**



Custom RAL Powdercoat Colors also available (CP), MOQ may apply.

**Wood Finishes (U-Channel & Door Panel Decorative Elements Only)**



**Optional Door Panel Plaques**



Door Panel Plaques are for Door Panel Decorative Elements only. Door number plaque can be personalized by Finish, Logo/Branding, Font Style, Font Size, Braille, Size of Plaque.

**Lens Options**

- BLC** Bottom Lens Cover (BLC)
- TLC** Top Lens Cover (TLC)
- STLC** Sealed Top Lens Cover (STLC)