

## Emergency Battery Back-Up

For Alva Lighting Personalized Collection Sconces

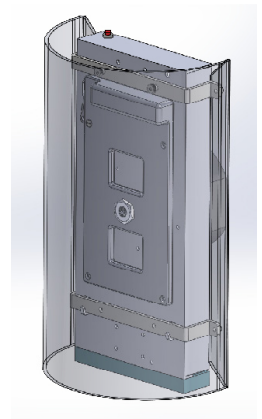
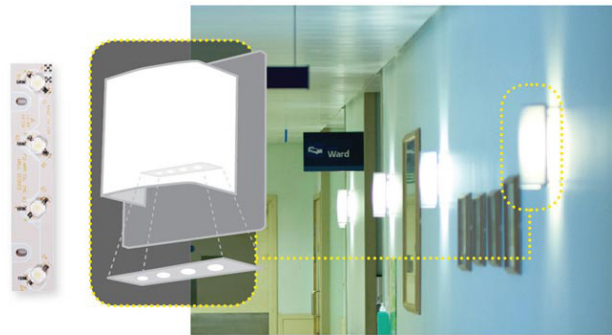


### SPECIFICATIONS

- Fulham FireHorse Hotspot1 LED Emergency back-up system
- Fully integrated Battery Back-up, all components enclosed within fixture
- >90 Minutes of emergency light output in the case of a power outage.
- In Emergency back-up mode, HotSpot1 systems provides 485 lumens from PCB mounted on bottom of sconce.
- 24-48 hour recharge time
- 120-277V input voltage
- Easy to install on all types of junction boxes, including pancake boxes
- Test button conveniently located on top of fixture
- Battery easily replaced in the field after 7 year rated lifetime
- Approvals/Class UL1310/Class 2/UL924/CEC
- California CEC T20 compliant

### Description

Alva Lighting offers Fulham's industry leading, fully integrated emergency back-up system as an option for all shade shapes using the AU-R15W LED module. During power outage the HotSpot1 system provides 485 lumens of illumination via an LED board mounted on the bottom of the sconce and oriented to provide light to the egress pathway. All electronics are fully integrated within the sconce.



### Testing the Battery Back-Up Fixture

Press and hold down the red test switch located at the top of the fixture, the fixture will switch to EM power. When the button is released the fixture will return to normal mode.

Battery should be replaced when fixture no longer provides 60% of light output at the end of 90 minutes.

### What's Included when ordering EM Option:

- Fulham HotSpot1 Driver Model FHS1-UNV-3.6L
- Fulham FHSBATT3-C3, Nickel Cadmium Battery
- Fulham FHS1AR4WL LED board

### Installation Instructions

See detailed instructions on page two of this document.

### Sconces available with Emergency Battery Back-Up:

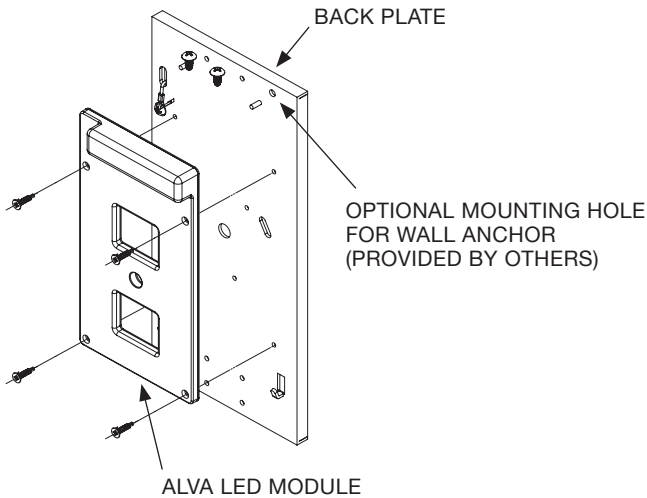
Rectangle 7"W x 12"H  
 Rectangle 7"W x 14"H  
 Rectangle 9"W x 12"H  
 Bob Standard

Curve 7"W x 12"H  
 Curve 7"W x 14"H  
 Curve 9"W x 12"H  
 Betty Standard

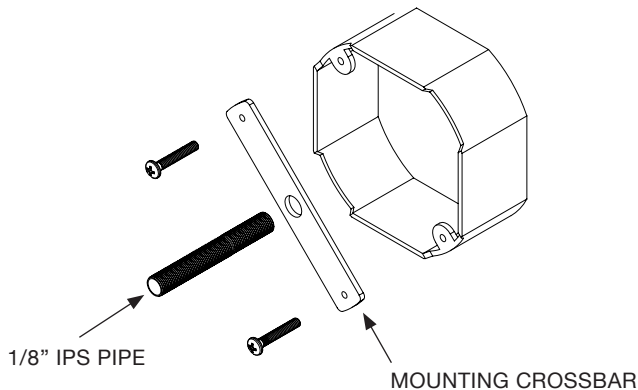
## Installing your Alva light fixture takes SIX easy steps:

**CAUTION:** Be sure the power is turned off by either removing the fuse or closing the circuit breaker. Installation must be in compliance with National, State and Local electrical codes.

1. Remove LED module from ESD bag. Using screws provided, mount LED module to back plate.

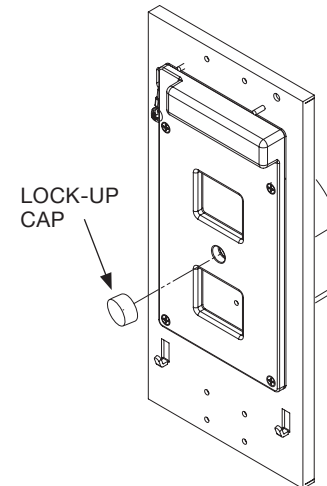


2. Attach the crossbar to the junction box. Screw the 1/8 IPS pipe into the cross bar.

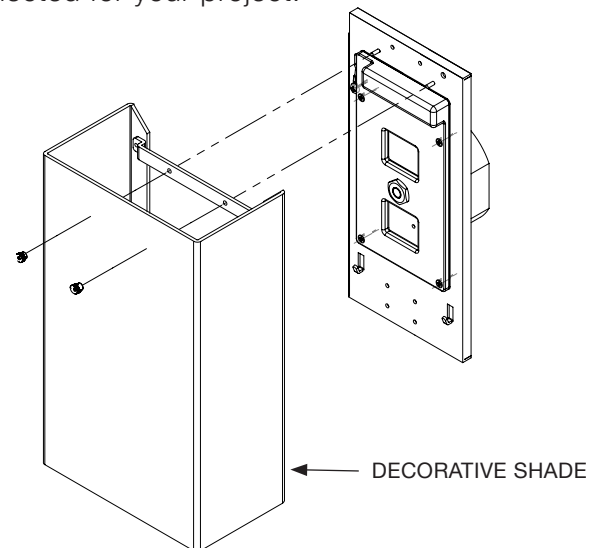


3. Connect the electrical wires from the junction box to the electrical wires of the LED module. For Energy Star compliance, utilize the WAGO male/female QuickConnect provided.

4. Place the LED light system (LED module with back plate) over the 1/8 IPS pipe from the universal mounting ring and carefully slide the fixture up snug to the junction box being careful to ensure the wires feed into the junction box. Screw on the lock-up cap to the 1/8 IP pipe.



5. You have the option to secure the back plate to the wall via a threaded or plastic anchor for additional support. Note hole location (marked Additional Anchor mounting location).
6. Mount decorative shade to the light module using hardware included with the shade selected for your project.



## **GENERAL INSTALLATION GUIDELINES FOR LED EMERGENCY DRIVER MODEL : FHS1-UNV-3.6L IMPORTANT SAFE PRACTICES**

When using electrical equipment and this lighting device basic safety precaution should be followed at all times including but not limited to the following:

### **PLEASE READ CAREFULLY AND FOLLOW ALL INSTRUCTIONS FOR YOUR OWN SAFETY**

**IMPORTANT:** An un-switched AC power source of 100VAC to 277VAC is required. This device is designed for use in fixtures listed for damp locations.

**CAUTION:** Make sure all electrical connections conform to the National Electrical Code and all applicable local regulations.

**CAUTION:** Do not let power supply cords touch hot surfaces.

**CAUTION:** Do not mount near gas or electric heaters.

**CAUTION:** Battery is rechargeable Ni-Cad or LiFePO4 type and must be recycled or disposed of properly.

Do not use this emergency driver with accessory equipment other than recommended by manufacturer; failure to follow this may cause an unsafe condition. Servicing should only be performed by qualified service personnel.

Do not use this emergency driver for other than intended use.

Equipment should be mounted in locations and at heights where it will not readily be subjected to tampering by unauthorized personnel.

**IMPORTANT:** Indicator (LED light) illuminated indicates battery in charge mode when AC power is applied. It is recommended and required by applicable code to test emergency ballast to ensure proper function of the system; push the test switch for thirty (30) seconds every 30 days to ensure the emergency driver is functioning as LED light source illuminated. Conduct a ninety minute (90) discharge test one time (1) per year; LED light source should be illuminated for a minimum of ninety minutes (90).

### **ASSEMBLY and FIELD INSTALLATION WIRING:**

**WARNING:** AC power must be off before proceeding with assembly or installation of emergency driver.

**TESTING SYSTEM:** The emergency battery requires a charge minimum of one (1) hour before testing the circuit. A full charge requires twenty four (24) or thirty six (36) or forty eight (48) hours, depending upon battery pack.